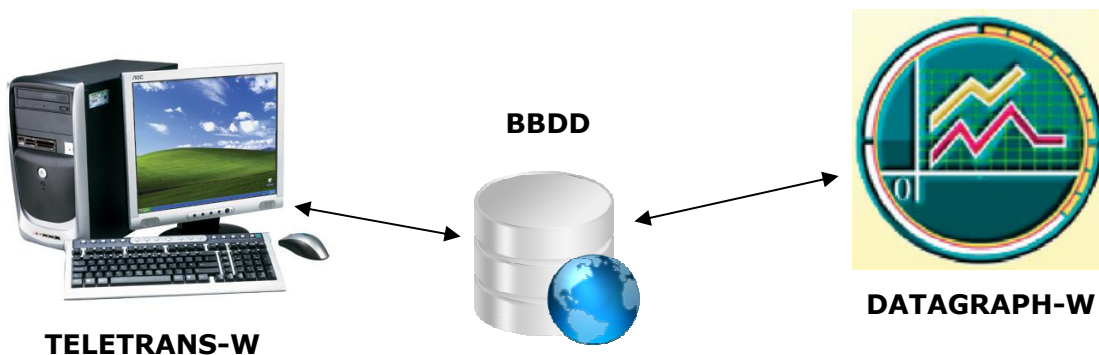


### METEO SOFTWARE PACKAGE

The METEO SOFTWARE PACKAGE is a software package designed for a communication between a computer and METEODATA/HYDRODATA stations and for the storage, processing and presentation of data from the stations.

The package, which operates with Windows (95, 98, NT, 2000, XP, Vista), consists of two distinct applications:

- TELETRANS-W: A tool for communications and data logging request from the METEODATA/HYDRODATA stations to the central computer and for sending commands as: start time, changes in the operating parameters, etc..
- DATAGRAPH-W: Application for managing and consulting of data from the stations and storage on the computer using TELETRANS-W.



## FEATURES

### TELETRANS-W

TELETRANS-W integrates the commands for data request from the stations, as instantaneous values or data stored in memory, and the date and time synchronization with the computer or modification in the storage period.

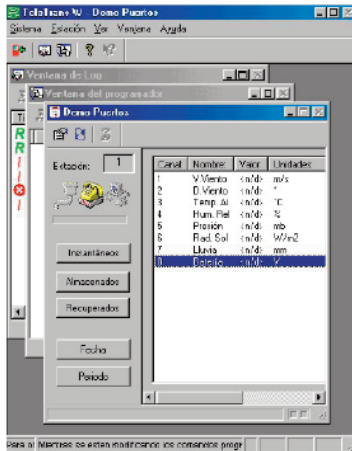
The application also allows to program an automatic execution of commands, specifying the start time, time interval between successive runs and number of retries on error in communications.

### DATAGRAPH-W

DATAGRAPH-W provides a multitude of data management possibilities. Requests can be done through simplest tables or graphics providing an intuitive analysis of data stored.

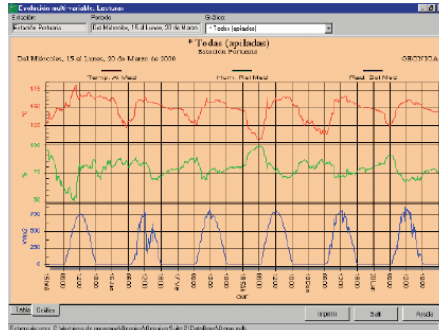
Graphical form of data display includes the ability to zoom, as well as the representation of several parameters, stacked or overlapping, and an advanced menu that permits the user to define the chart rendering options (colours, axes, frames, etc.). Both tabular and graphic format can be printed.

## METEO SOFTWARE PACKAGE



Windows interface

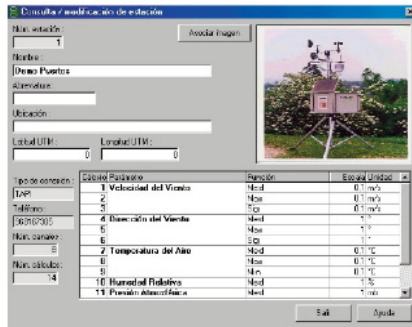
Advanced Menu with multiple graphics capabilities



Multiple communication options:

- Fixed-line telephony (PSTN).
- Mobile Communication (GSM).
- Direct communication via serial port (RS-232).
- Alternative communication systems (radio, satellite).

The information can be represented in several ways. The user only have to select one.



Each station has its own configuration window



### Specifications

- Application in Windows environment for data dump request and integrated in METEO SOFTWARE PACKAGE.
- Net station Window: one window for each station on the Net.
- Possibility to schedule commands to run automatically.
- LOG window: Registration for all events.
- Integrated Window application in the METEO SOFTWARE PACKAGE for the consult, analysis and export of data stored with TELETRANS-W.
- One Window for the configuration of each station.
- Possibilities to consult data:
  - Table form.
  - Graphical form: user can define chart name, select parameters and their order of appearance in tables. It allows stacked or overlapping parameters present in the figures.
- Possibility of comparison of parameters from the same station or different stations.