

### Windsocks

The windsocks are used to measure the direction and when well-calibrated, the approximate speed of the wind. They are useful to prevent accidents caused by sudden gusts.

Ideal for any facilities either in port areas or others, as airfields and motorways.

Designed according to standard FAA / ICAO.



## FEATURES

### Manufacture

Our windsocks are made from top quality long-life nylon, treated to resist the hard effects of wind and weather.

The seams are double and nylon thread to ensure greater resistance.

Anchor holes have been reinforced with brass grommets for better grip and resistance to corrosion.

### Windssock Kit

#### **Pole:**

- Galvanized steel.
- Fixing on the ground.
- Tilting Model: It allows an easy access to the sleeve by tilting the top of the mast.

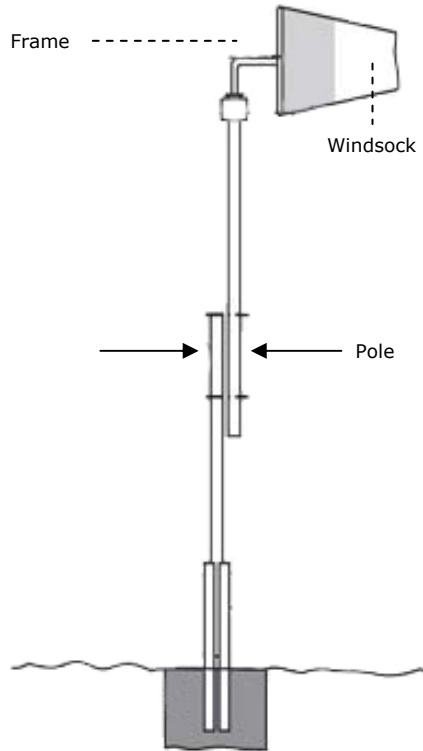
#### **Frame:**

- It is formed by a galvanized pipe, with cap, ensuring the firmness of the union between the mast and the frame.
- Mounted on a ball bearing.

#### **Windssock:**

- One or two colours (stripes).

## Windsocks



- 9 km/h on fringe.
- Fixing to the floor.
- Option: Lighting system for the windsock.

### Windsock Specifications

Description	Size
Windsock	Ø330,2mm x 1,37m
Windsock	Ø101,6mm x 38,1cm
Windsock	Ø203,2mm x 91,44cm
Windsock	Ø254mm x 91,44cm
Windsock	Ø457,2mm x 91,44cm
Windsock	Ø457,2mm x 1,82m
Windsock	Ø457,2mm x 2,43m
Windsock	Ø609,6mm x 2,43m

Description	Size
Pole	Client specifications
Pole: Tilting model	Client specifications

### Frame Specifications

Description	Diam. (mm)
Frame	Ø101,6
Frame	Ø152,4
Frame	Ø203,2
Frame	Ø330,2
Frame	Ø457,2
-----	
Ball bearing frame	Ø203,2
Ball bearing frame	Ø330,2
Ball bearing frame	Ø457,2
Ball bearing frame	Ø609,6
Ball bearing frame	Ø914,4
Ball bearing frame	Ø914,4
-----	
Extended ball bearing frame	Ø330,2
Extended ball bearing frame	Ø457,2
Extended ball bearing frame	Ø609,6
Extended ball bearing frame	Ø914,4